



**Generator :**

Stamford . Single bearing alternator , Class H insulation  
 230/400 v , 3 Phase , 50 Hz , PF 0.8 . Electronic Governer  
 Cummins four cycle , Water cooled , 1500 rpm diesel engine



Model	Standby		Prime		Engine					Dimention			Dry weight
	KVA	KW	KVA	KW	Type	Kwm(st)	Cyl	Bore	Stroke	L	W	H	Kg
<b>C11D5</b>	11	8.8	10	8	D1703-BG	15	3L	87	92.4	1300	730	1130	361
<b>C15D5</b>	15	12	13	10.4	D1703-BG	15	3L	87	92.4	1300	730	1130	370
<b>C22D5</b>	22	17.6	20	16	4B3.3G1	36	4L	95	115	1753	930	1256	544
<b>C33D5</b>	33	26.4	30	24	4B3.3G1	36	4L	95	115	1753	930	1256	580
<b>C38D5</b>	38	30.4	35	28	4B3.3G1	36	4L	95	115	1753	930	1256	640
<b>C55D5</b>	55	44	50	40	4BT3.3G2	51	4L	95	115	1753	930	1256	640
<b>C70D5</b>	70	56	63	50	4BT3.9G4	64	4L	102	120	1950	1046	1221	1002
<b>C80D5</b>	80	64	72	58	4BTA3.9G1	73	4L	102	120	1950	1046	1221	1014
<b>C110D5</b>	110	88	100	80	4ISBEG1	102	4L	102	120	1977	1046	1311	1162
<b>C150D5</b>	150	120	136	109	6BTA5.9G2	145	6L	102	120	2404	1100	1472	1167
<b>C180D5</b>	180	144	164	131	6ISBEG1	164	6L	102	120	2404	1100	1487	1400
<b>C200D5</b>	200	160	182	146	6CTAA8.3G1	203	6L	114	135	2686	1300	1547	1840
<b>C220D5</b>	220	176	200	160	6CTAA8.3G1	203	6L	114	135	2686	1300	1547	1840
<b>C250D5</b>	250	200	227	182	6CTAA8.3G2	231	6L	114	135	2686	1300	1547	1940
<b>C300D5</b>	300	240	275	220	QSL9G5	310	6L	114	145	3549	1100	1928	2422
<b>C330D5</b>	330	264	300	240	QSL9G5	310	6L	114	145	3135	1100	1928	2422
<b>C350D5</b>	350	280	320	256	NT855G6	310	6L	140	152	3549	1100	2078	2860
<b>C400D5</b>	400	320	360	288	NTA855G4	351	6L	140	152	3549	1100	2078	3643





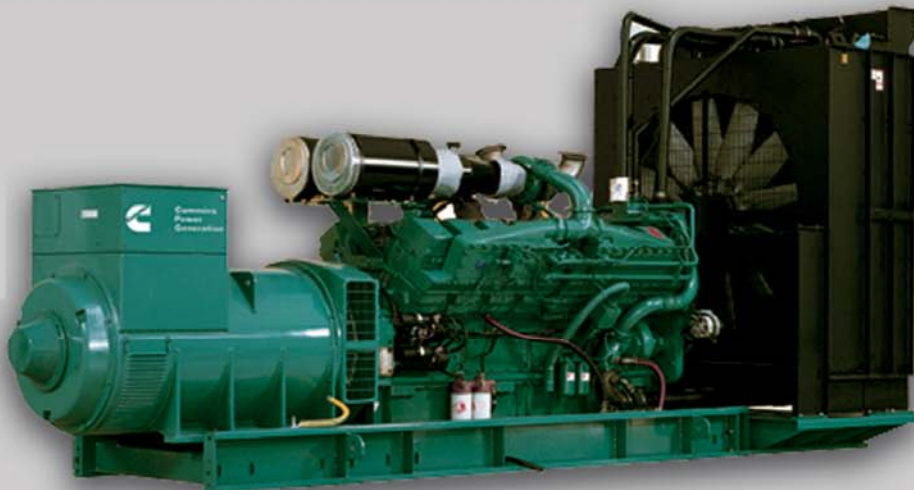
# CUMMINS POWER

Power products from 500 KVA to 2500 KVA

**Diesel : Cummins**

**Generator :**

Stamford . Single bearing alternator , Class H insulation  
 230/400 v , 3 Phase , 50 Hz , PF 0.8 . Electronic Governer  
 Cummins four cycle , Water cooled , 1500 rpm diesel engine



Model	Standby		Prime		Engine					Dimention			Dry weight
	KVA	KW	KVA	KW	Type	Kwm(st)	Cyl	Bore	Stroke	L	W	H	Kg
<b>GenSet</b>													
<b>C500D5</b>	500	400	450	360	QSX15G6	459	6L	137	169	3376	1500	2065	4089
<b>C550D5</b>	550	440	500	400	QSX15G8	500	6L	137	169	3376	1500	2065	4199
<b>C650D5</b>	650	520	590	472	KTA19G8	575	6L	159	159	3490	1467	2100	4410
<b>DFGB</b>	706	565	640	512	VTA28G5	612	6L	140	152	3875	1423	1942	5665
<b>DFGD</b>	825	660	750	600	VTA28G6	722	12V	140	152	3875	1423	1942	6699
<b>C900D50</b>	900	720	820	656	QSK23G3	768	12V	170	170	4486	1879	2214	7105
<b>DFHC</b>	1041	833	939	751	QST30G3	895	6L	140	165	4460	1640	2092	6141
<b>DFHD</b>	1110	888	1000	800	QST30G4	970	12V	140	165	4547	1722	2332	8000
<b>C1250D5A</b>	1250	1000	1125	900	KTA38G9	1070	12V	159	159	4750	2100	2400	8850
<b>C1400D5</b>	1400	1120	1250	1000	KTA50G3	1227	12V	159	159	5105	2000	2238	10963
<b>C1675DS</b>	1675	1340	1400	1120	KTA50G8	1429	16V	159	159	5866	2033	2333	11921
<b>C2000DS</b>	2063	1650	1875	1500	QSK60G3	1790	16V	159	190	6175	2286	2537	15012
<b>C2250DS</b>	2250	1800	2000	1600	QSK60G4	1915	16V	159	190	6175	2286	2537	15510
<b>C2500DSA</b>	2500	2000	2250	1800	QSK60G8	2145	16V	159	190	6175	2494	2537	17217

